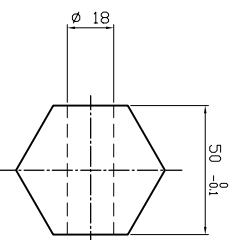


**OUTPUT SHAFT**

**TECHNICAL DATA**

DESCRIPTION: PG 161 PE 5.60 12012	
PLANETARY GEARBOX	BRAKE
RATIO I = 5,6	TYPE BRAKING TORQUE Min.
CONT TORQUE 121 daNm	RELEASE PRESSURE Min.
MAX TORQUE 242 daNm	MAX PRESSURE
INPUT SPEED max 2800rpm	LUBRICANT
LUBRICANT ISD 3448	OIL QUANTITY
OIL QUANTITY 15 l	TYPE PART. N.
	DESCRIPTION 12012
	40X36 25-CH.8 2M12
	MOTOR



☐	BREATHER PLUG	▶	DRAIN PLUG
▽	FILLING PLUG	⊗	ELBOW
●	LEVEL PLUG	⊕	EXTENSION

PART. N.	PAINT COLOR	CUSTOMER
WEIGHT 30 KG	MOUNTING POSITION V1	

<b>haumea</b> mechanics on demand	DATE
	SGN.
	N.DIS

Haumea S.r.l. - Via Nicola Sacco, 12 - 47122 Forlì (FC) ITALY - Tel. +39 0543 779518